

SPACEGUARD
PRODUCTS™

FordLOGAN

Woven Wire Partition Systems



Standard-Size Wire Panels

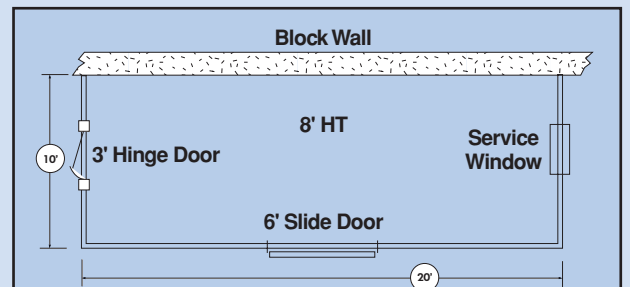
W	7' HIGH PANELS		8' HIGH PANELS		9' HIGH PANELS		10' HIGH PANELS	
	Stock Number	Lbs.	Stock Number	Lbs.	Stock Number	Lbs.	Stock Number	Lbs.
1 ft.	P17*	16	P18*	18	P19	22	P10*	24
2 ft.	P27*	28	P28*	29	P29	31	P20*	36
3 ft.	P37*	33	P38*	41	P39	44	P30*	49
4 ft.	P47*	43	P48*	51	P49	54	P40*	61
5 ft.	P57*	48	P58*	57	P59	61	P50*	68

The trusted name in strong, dependable wire partitions.

Ford Logan wire partition systems are easy to install and provide lasting protection of materials and personnel. Our woven wire pattern allows for full visibility and unrestricted circulation of air, light and heat.

Complete installation instructions and attachment hardware are included. Please specify color. Stock color is gray. Other colors available are blue, yellow, black, red, and green. Please allow longer lead times for non-stock colors.

• Stock gray ships in 48 hours. • FOB IN



HOW TO ORDER

Make a rough floor plan of area to be enclosed noting overall measurements. Fax plan to:
800-428-5758

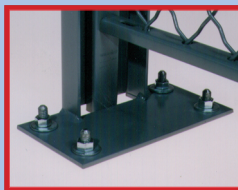
To request help, call us at
800-841-0680

Specifications

Panels: 10 gauge- 1 1/2" triple crimped steel diamond wire mesh securely clinched to frames. Vertical frames made of 1 1/4"x 5/8" roll formed 'C' type channels. Horizontal frames made of 1"x1/2" roll formed channels. All frames mortised and tenoned at corners and equipped with slotted holes for quick mounting.

Hardware: Heavy duty 1/4" bolts are provided. All items furnished with appropriate hardware. Floor and wall anchors can be furnished upon request. Base shoes are provided and are easily attached to the bottom of panels.

Finish: Phosphate washed with a standard finish of **polyester powder coat** high quality gray or 5 additional colors. Please consult factory for information on custom colors. Additional packaging charges may be required.



Line Posts

Stock No.	Ht.	Lbs.
*LP7	7'	19
*LP8	8'	23
LP9	9'	25
*LP10	10'	29



Corner Post

Stock No.	Ht.	Lbs.
*CP7	7'	12
*CP8	8'	13
CP9	9'	14
*CP10	10'	15



3-way Post

for 90° intersections.		
Stock No.	Ht.	Lbs.
*TWP7	7'	12
*TWP8	8'	14
TWP9	9'	15
*TWP10	10'	17



Flex Panel

16-ga. sheet steel panels adjust from 2 1/2" to 1 ft.		
Stock No.	Ht.	Lbs.
*Flex7	7'	38
*Flex8	8'	41
Flex9	9'	46
*Flex10	10'	51



Adjustable Panel

10 gauge woven mesh adjust from 3" to 14".		
Stock No.	Ht.	Lbs.
*FLAJP7	7'	38
*FLAJP8	8'	41
FLAJP9	9'	46
FLAJP10	10'	51



Wall Clamps (package of 4)

Stock No.	Lbs.
WCK	1



FordLOGAN

Doors & Service Windows

Double slide door



Sliding Doors

Designed for mounting outside or inside wire partition. Equipped with two-wheel trolleys, enclosed track, door guide and lock keeper. Doors provide standard 7' height opening. A wide assortment of widths, heights, and door arrangements are available to meet your needs.

Specify color when ordering. • FOB IN, and *NV

Double Slide Doors
Includes 4 line posts and channel header. (no transom)

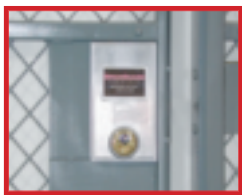
WxH	Stock No.	Lbs.
6'x7'	DS677	232
8'x7'	DS877	272
6'x8'	DS688	250
8'x8'	DS888	285
6'x10'	DS600	270
8'x10'	DS800	315
10'x10'	DS000	368

Single Slide Doors
7' high (with transom)

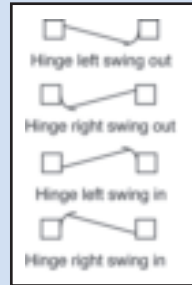
WxH	Stock No.	Lbs.
3'x7'	S377*	85
4'x7'	S477*	95
5'x7'	S577*	110
6'x7'	S677	135
3'x8'	S378*	95
4'x8'	S478*	107
5'x8'	S578*	125
6'x8'	S678	155
3'x9'	S379	95
4'x9'	S479	110
5'x9'	S579	130
6'x9'	S679	163
3'x10'	S370*	98
4'x10'	S470*	114
5'x10'	S570*	135
6'x10'	S670	168

Extra wide Single Sliding Doors
- Full partition (no transoms)

WxH	Stock No.	Lbs.
8'x8'	S888	295
8'x10'	S800	325
10'x8'	S088	313
10'x10'	S000	361



Locks ordered separately. Several lock options available upon request.



Single hinged door

Hinged Doors

Doors hinge left or right, opening in or out. Openings are 7' high with transom filling out the panel height of 8', 9', and 10'. Hinged double width doors are available.

Call 800-841-0680 for information.

FOB IN

Single Width Hinged Doors

WxH	Stock No.	Transom	Lbs.
3'x7'	H377*	NONE	53
4'x7'	H477*	NONE	63
3'x8'	H378*	1'	59
4'x8'	H478*	1'	71
3'x9'	H379	2'	64
4'x9'	H479	2'	74
3'x10'	H370*	3'	68
4'x10'	H470*	3'	78

Stock Service Windows

Slide-up window with shelf (shown)

Window is 24"x21½" high and slides up for servicing. Window has lift catches. Wt.30 Lbs. Specify Color. FOB IN

Fold-down window

Opening is 24"x15"H, with 23½"x15¾" deep shelf. Bottom hinged sheet metal closure forms shelf. Wt.18 Lbs. Specify Color. FOB IN



Local Distributor:

